

Key Features of this Holiday Home

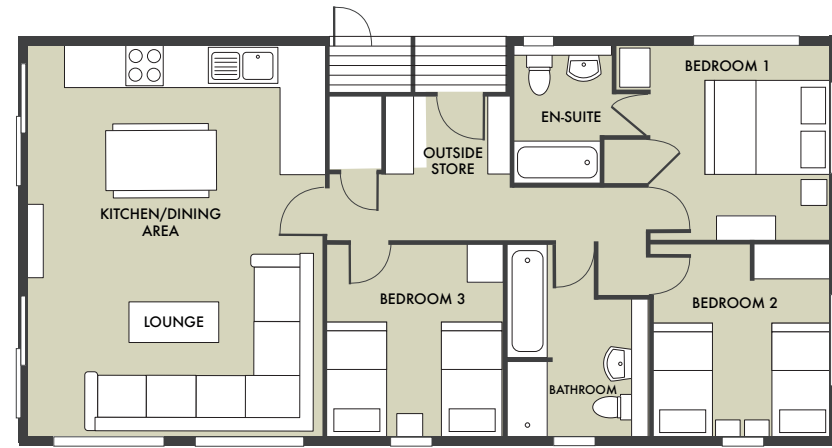
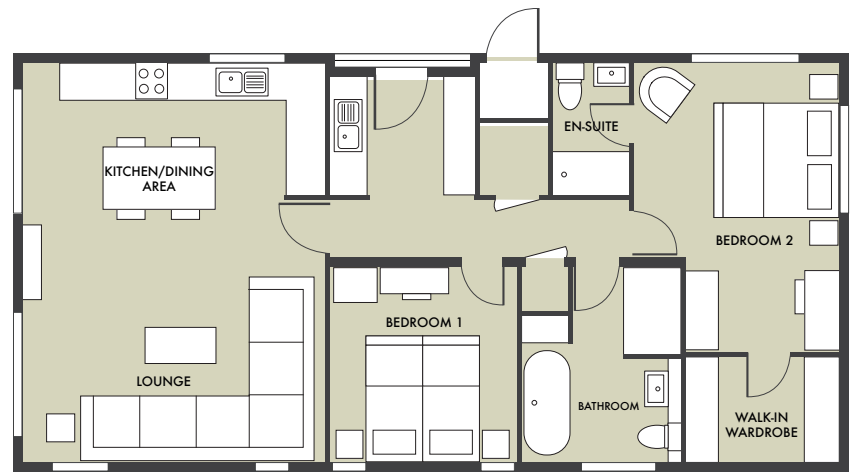
- ✓ Exclusive bespoke design
- ✓ Large entrance and utility room with boot area
- ✓ Velux skylight windows and underfloor heating
- ✓ Spacious open plan living area
- ✓ Modern kitchen with integrated Bosch appliances, incl. 4-burner gas hob, oven, microwave, fridge-freezer, dishwasher, wine cooler & dual washer-dryer
- ✓ Family bathroom with double shower and freestanding bath
- ✓ Walk-in wardrobes, dressing area and shower en-suite to master
- ✓ Large, spacious decking

Benefits of Ownership

- 🔑 Simple 'turnkey' holiday home ownership
- 👤 NO stamp duty to pay
- ⚖️ NO legal fees to pay
- 🇬🇧 A range of financing options including equity release, part-exchange and hire purchase
- 👥 Fully managed letting service available
- 📅 Holiday at any time of year with no closed season



The Seaspray
45 x 22 | 2 Bedrooms



The Seaspray
45 x 22 | 3 Bedrooms

For more information, or to arrange your personal viewing appointment, please call Jeremy on **01726 843 425** or email: jeremy.reuben@swholidayparks.co.uk

Important notice: These particulars do not form part of any offer or contract and must not be relied upon as statements or representations of fact. Any areas, measurements or distances are approximate. The text, photographs and plans are for guidance only and are not necessarily comprehensive.

All accommodation at Seaview Gorran Haven is sold for HOLIDAY USE ONLY and must not be used as a primary place of residence. Evidence of a permanent address is required before purchasing and on-going annual checks of your permanent home address are a compulsory requirement of ownership.



The Seaspray

45 x 22 | 2 & 3 Bedrooms
Bayview

southwestholidayparks.co.uk
01726 843 425

Welcome to the Seaspray

With a distinctive pitched roof design and stunning detailing throughout, the brand-new and bespoke Seaspray lodge has been specifically designed for Seaview and encompasses contemporary design at its finest.

Entering through a large utility area, the spacious open plan living area is light, bright, and inviting with Velux skylight windows ensuring sunshine floods throughout the room. Dressed in calming neutral colours offset by beautiful timber finishing, there's a subtle and sophisticated touch to the elegant décor.

The modern two-tone kitchen comes fully equipped with everything you could possibly need throughout your time away, including a built-in oven, microwave, and wine cooler, as well as a freestanding dining table with bench seating, so there's always room for the entire family.

Available in both 2- and 3-bedroom options, the luxuriously spacious master also benefits from a king-size bed, a large walk-in wardrobe and dressing area, as well as a beautiful shower en-suite.

Perfect for a family of adventurers, this lodge has been cleverly designed for its location, boasting an outside storage area, as well as providing ample storage within – ideal for those sandy beach trips. Unique and contemporary, this beautiful lodge has it all.



Lodge Location

Our beautiful Seaspray lodge is situated on an enviable, front row plot on our Bayview development. With a large decking area complete with glass balustrading, this luxury lodge is perfect for soaking up the beautiful unspoilt views of the South Cornwall coast. The Seaspray also benefits from a double-parking space and our 12-month holiday season means it can be enjoyed at any time of the year.

Why Choose Seaview Gorran Haven?

Seaview Gorran Haven is located centrally on the south Cornish coast, overlooking the ocean and the Roseland Peninsular, making it the perfect location to escape from the hustle and bustle of everyday life.

Seaview's secluded location doesn't mean that you're cut off from the host of local attractions nearby however; you're spoilt for choice when it comes to exploring the beauty of Cornwall. Enjoy an early morning jog down to the sandy beaches of Hemmick, discover the Lost Gardens of Heligan, Caerhayes Castle and the world-famous Eden Project or spend a leisurely day exploring the stunning villages of Gorran Haven and Mevagissey just a short drive away.








As an Owner at Seaview, you'll also have full use of our five-star leisure facilities, including a heated outdoor swimming pool and dog-friendly park areas – so no matter the weather, you can enjoy your holiday home and its gorgeous location.



Your Holiday Home Includes

-  Delivery, siting and all utilities connected
-  All kitchen appliances
-  High-quality freestanding furniture
-  Digital TV aerial and satellite connection
-  Manufacturer's Warranty
-  Large, low maintenance decking with glass front

Park Features & Benefits

-  5* Visit England graded park
-  Full 12-month holiday season
-  Stunning sea views
-  Outdoor heated swimming pool
-  Children's play areas
-  Complimentary golf at Carlyon Bay
-  Close to the South West Coast Path and beautiful sandy beaches

